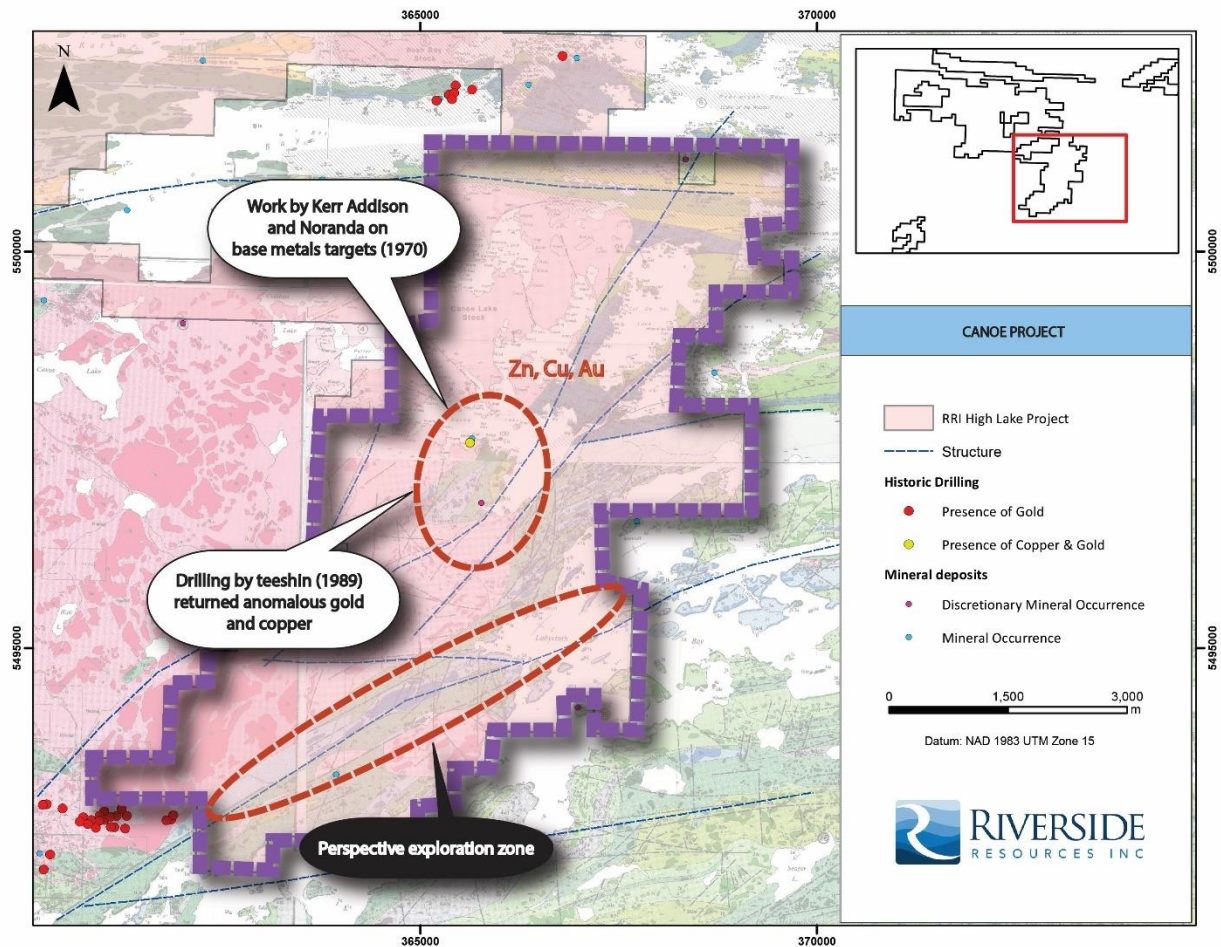


# CANOE PROJECT:

## OVERVIEW

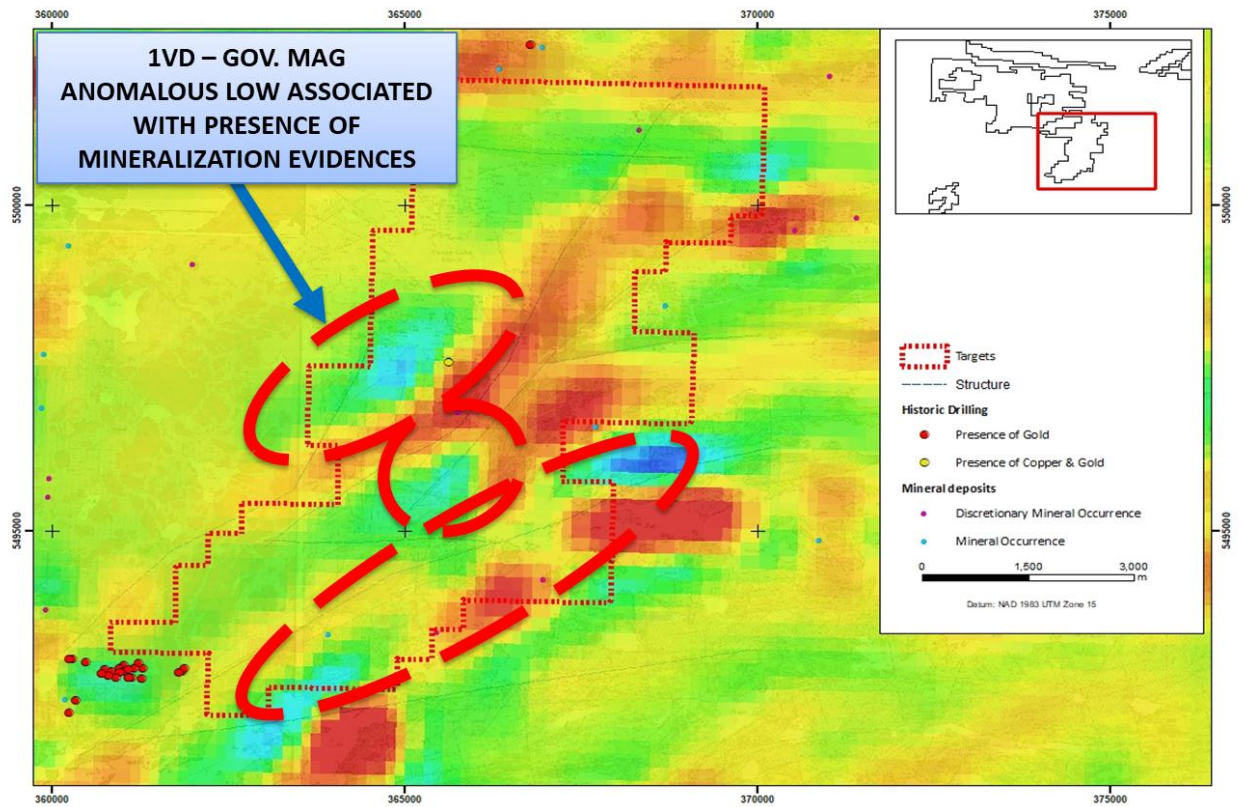
<b>COMMODITY:</b>	<b>Copper, Molybdenum, Gold, Silver</b>
<b>DEPOSIT TYPE:</b>	<b>VMS, folded metasedimentary/volcanic sequence</b>
<b>LOCATION:</b>	<b>Western Ontario, Canada</b>
<b>SIZE:</b>	<b>4,260 hectares</b>
<b>STATUS:</b>	<b>Available for Option</b>

Canoe project is located along the edge of the main pluton bounding the known Shoal Lake gold deposit to the north which host over 350,000 ounces of gold<sup>1</sup> The area shows noted anomalies at surface and in drill holes of Cu-Zn-Au especially at the contact between the pluton and the meta-volcanics. As with the other two projects, the Canoe project is located along a key structural feature which is oriented NE and merging into EW to the north of the property. Historical work includes drill holes by Teeshin Resources Ltd., (1988), trenching, surface sampling and EM geophysics. Presence of gold to the southwest of the property is particularly abundant and can be traced into Riverside's property.



**GEOLOGIC MAP OF RIVERSIDE'S CANOE PROJECT, SHOWING GEOLOGY AND HISTORICAL FINDINGS ACROSS THE PROPERTIES. THIS IS A PORTION OF THE FULL HIGH LAKE GREENSTONE AREA CONTROLLED BY RIVERSIDE RESOURCES**





**MAG MAP OF RIVERSIDE'S CANOE PROJECT WITH HIGHLIGHTED TARGETS**



**PHOTO OF RIVERSIDE'S V.P. EXPLORATION FREEMAN SMITH, EXPLORING THE HIGH LAKE GREENSTONE BELT**

### Qualified Person, Qa/Qc & Technical Disclosures

The scientific and technical data contained in this news release pertaining to the Ontario Projects was reviewed and approved by Freeman Smith, P.Geo, a non-independent qualified person to Riverside Resources, who is responsible for ensuring that the geologic information provided in this news release is accurate and who acts as a “qualified person” under National Instrument 43-101 Standards of Disclosure for Mineral Projects.

Regarding previous historical operators work and resource estimates: The reliability of historical data is uncertain but is considered to be relevant by Company management for focusing exploration work; however, all past work will have to be examined and resampled for the purposes of reporting.

All data represented here from historical reporting, including but not limited to, drill results and resource estimates are historical in nature and require caution readers as the vintage work.