



CECILIA GOLD SILVER PROJECT: AVAILABLE FOR OPTION

Cecilia Project (Au-Ag) Sonora, Mexico

The 6,897 hectare Cecilia Project is located in a favorable mining jurisdiction with paved highway and powerline within 30 km

Riverside holds 100% title and interest to 5 concessions

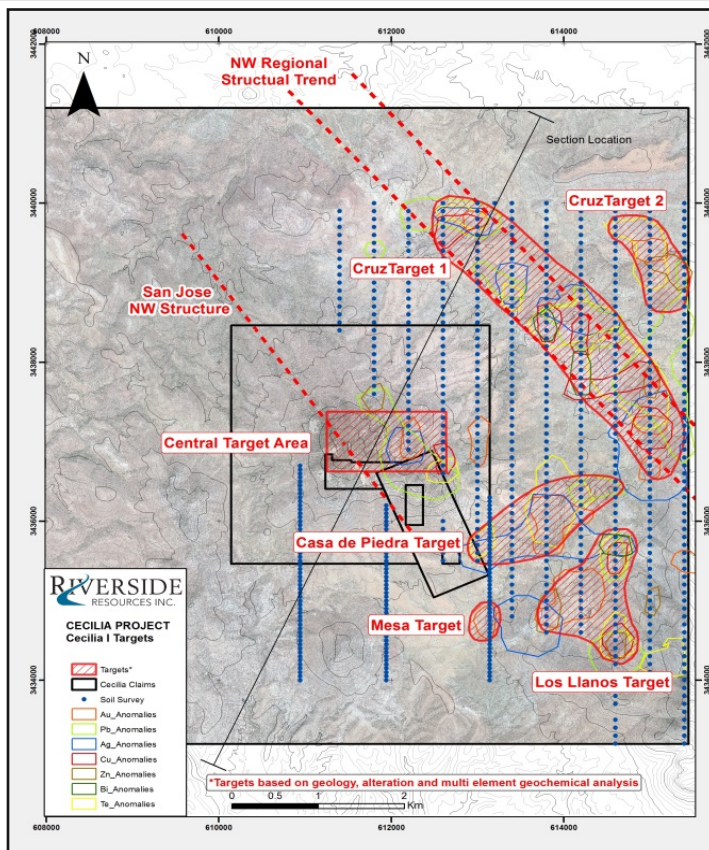
Surface access agreements in place and in good standing with surface land owners for access to explore

Target at Cecilia is a gold-silver ore system related to a Tertiary rhyolite dome complex; deposit analogies include Fresnillo's San Juan project and Silver Standard's La Pitarrilla project

Potential exists for deposits of bulk-mineable gold, epithermal high-grade gold-silver veining and mantos of disseminated and/or replacement Au-Ag enriched polymetallic mineralization

Extensive exploration database includes ~2,000 historical rock assays, logs and assays for 23 drill holes, maps of underground workings with 100's of assays

Riverside 2018 soil survey and regional exploration program highlighted 5 additional high priority gold targets (below)



Riverside 2018 soil sampling program and resulting gold targets



Select sample of vein quartz: 58 g/t Au



North breccia target sampling: 2m @ 7.46 g/t Au

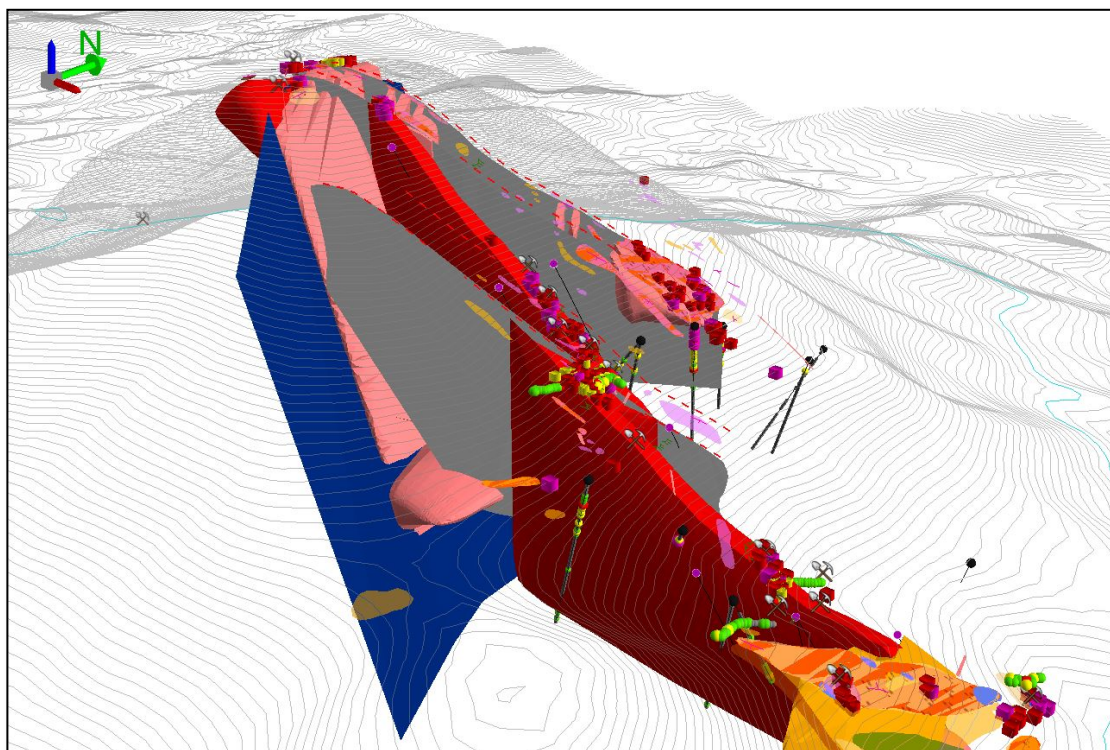


North breccia target sampling: 1.9m @ 2.63 g/t



Riverside sampling program: 406 channel samples – 21% assays > 0.3 g/t Au – 7% > 1 g/t Au

Targeting and Mineralization at Cecilia



3D interpretation and drill targeting at Cecilia using data from drilling, underground and surface mapping and sampling

Highlights from exploration history

- 137 of 683 (20%) surface rock-chip samples assaying greater than 0.5 grams gold/tonne (g/t Au), with 72 of the 683 samples (approx.11%) having assays of greater than 1 g/t Au.
- A semi-continuous series of surface chip-channel rock samples across 119.0 metres (m) of altered volcanic rock that average 0.86 g/t Au, including 25 m grading 2.19 g/t Au. This sampling tested the North Breccia gold target.
- A drill-hole intersection of the North Breccia zone that averaged 1.41 g/t Au across 30.0 metres starting at 4.0 m in Cambior hole 138-95-08.
- A 127 m intersection of altered poly lithic breccia conglomerate in CRM hole 88-03, North Breccia target, that produced 19 samples which were shown to contain 1-2 g/t Au and 12-28 g/t silver (Ag)
- A 118 m intersection of silicic volcanic rocks in CRM hole 88-04, Central Zone target, produced 77 core samples which were found to contain 1-2 g/t Au and 12-136 g/t

