



RIVERSIDE  
RESOURCES INC

KNOWLEDGE IS GOLDEN

CORPORATE PRESENTATION

November 2020

## Forward-Looking Statements

This document contains forward-looking statements and factual information that are current as of the date the document was originally created. Riverside Resources Inc. ("the Company") disclaims any intention or obligation to update or revise any forward-looking statements, whether as a result of new information, future events or otherwise. Forward-looking statements include, but are not limited to, statements with respect to the timing and amount of estimated future exploration, success of exploration activities, expenditures, permitting, and requirements for additional capital and access to data.

Forward looking statements involve known and unknown risks, uncertainties, and other factors which may cause the actual results, performance or achievements of the Company to be materially different from any future results, performance or achievements expressed or implied by the forward looking statements. Such factors include, among others, risks related to actual results of current exploration activities; changes in project parameters as plans continue to be refined; the ability to enter into joint ventures or to acquire or dispose of properties; future prices of mineral resources; accidents, labor disputes and other risks of the mining industry; ability to obtain financing; and delays in obtaining governmental approvals of financing

Any statements, opinions, projections, forecasts or other material contained in this presentation do not constitute a commitment, representation or warranty by the company or its directors, officers, agents or employees. The directors, officers, agents and employees of the company shall in no way be liable to any person or body for any loss, claim, demand, damages, costs or expenses of whatsoever nature arising in any way out of, or in connection with, the information contained in this presentation. This presentation does not constitute an offer to sell securities and is not a solicitation of an offer to buy securities. It is not to be distributed to third parties without the consent of the company. An investment in the company is considered to be speculative in nature. Each individual should rely solely upon its own investigations and inquiries with respect to the company and agrees it will not in any way rely upon this presentation. The company recommends that you consult your own professional advisor(s).

## Qualified Person

The scientific and technical data contained in this presentation relating Riverside's mineral properties was reviewed by Freeman Smith, P.Geo., a non-independent qualified person to Riverside Resources, who acts as a "qualified person" under National Instrument 43-101 Standards of Disclosure for Mineral Projects.

# Investment Highlights

- Highly experienced & focused exploration team
- 75,000 Location Database (\$20M+ in past investment)
- +\$3M in cash
- Less than 69M shares outstanding
- Expanding the Canadian portfolio
  - Staked 230 km<sup>2</sup> High Lake Greenstone Belt
- New partnerships in 2020 (Drilling this Fall)
  - Exploration Funding Agreement with BHP (focus on copper discoveries in Sonora, Mx)
  - Option Agreement w/Hochschild Mining (5 yrs / US\$8M) at Los Cuarentas Project
  - Option Agreement w/Carlyle Commodities Corp (3 yrs / \$2.5M) at Cecilia Project



Riverside Geologists in Sonora, Mexico



# Experienced and Balanced Management Team

## Management

- John-Mark Staude, *President & CEO*
- Alberto Orozco, *VP Corporate Development*
- Freeman Smith, *VP Exploration*
- Erika Sweeney, *Manager of Exploration & Corp Development*
- Pedro Herrera, *Country Manager (Mexico)*
- Robert Scott, *CFO*

## Board of Directors & Advisors

- John-Mark Staude, *Director*
- Brian Groves, *Director*
- Carol Ellis, *Director*
- James Clare, *Director*
- Walter Henry, *Director*
- Jones Lang, *Advisor*



Riverside in the Field with Directors

For full bios please visit Riverside's website at [www.rivres.com](http://www.rivres.com)

# Highly Experienced Technical Team

## John-Mark Staude, President & CEO

Mr. Staude earned a Masters of Science from Harvard University in 1989 and a Ph.D. in economic geology from the University of Arizona in 1995.

## Alberto Orozco, VP Corporate Development

Mr. Orozco has 15 years of mining experience working with Linear Gold Corp., Pediment Gold and more recently, Argonaut Gold

## Freeman Smith, VP Exploration

Mr. Smith has 19 years of professional experience in the resource industry working with Oro Gold, BCGold Corp and Goldplay Explorations.

## Pedro Herrera, Country Manager (Mexico)

Mr. Herrera holds his MSc. and has more than 20 years of exploration experience throughout Mexico.

## Ron Burk, Advisor

Mr. Burk has 30 years of work experience in the minerals industry and contributed in the discovery of the Pitarrilla Project in Durango, Mexico.

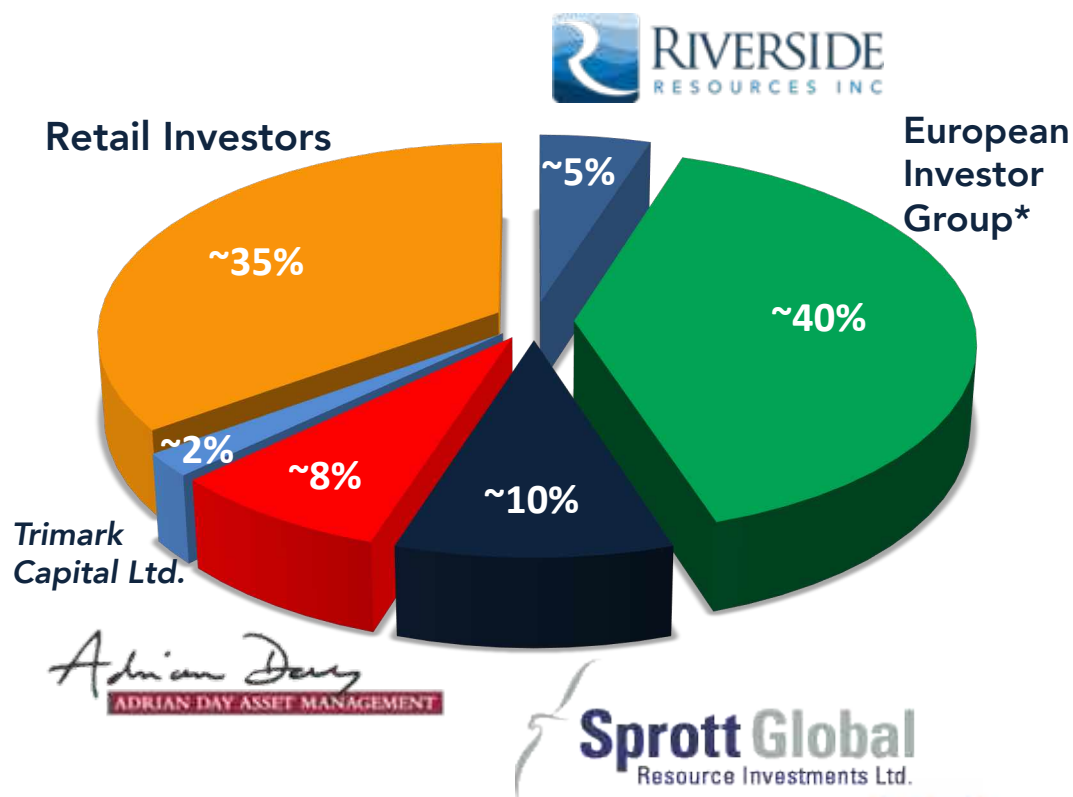
## Companies our technical team has worked with



# Share Structure and Key Shareholders

Issued (since IPO in 2007)	68,362,131
Options	3,773,000
Warrants (0.22)	13,235,432
Fully Diluted	85,370,563
Cash	+\$3,000,000
52 Week Hi-Lo	\$0.52 - \$0.10
Market Cap	~C\$16M

Major Shareholders own ~65% of outstanding shares



\*European Investor Group consists of high net worth investors and small resource funds

\*These amounts are estimated to the best of our knowledge as of November 1, 2020

# Riverside's Equity Portfolio

## Shares Held by Riverside

~1.5M Shares\*  Arizona Metals Corp.

~15M Shares\*\* Other Private/Non-Public Companies

\*+\$1M CAD deemed value as of Nov 1, 2020

\*\*Shares held in illiquid private companies/shells



## Partner Funded Exploration



# Partners



RIVERSIDE  
RESOURCES INC

For every \$1 Riverside spends on exploration the Company has generated ~\$2 in partner-funded exploration.

\*since inception



## Major companies Riverside has had Strategic Alliances with

---



ANTOFAGASTA  
MINERALS



**CLIFFS**

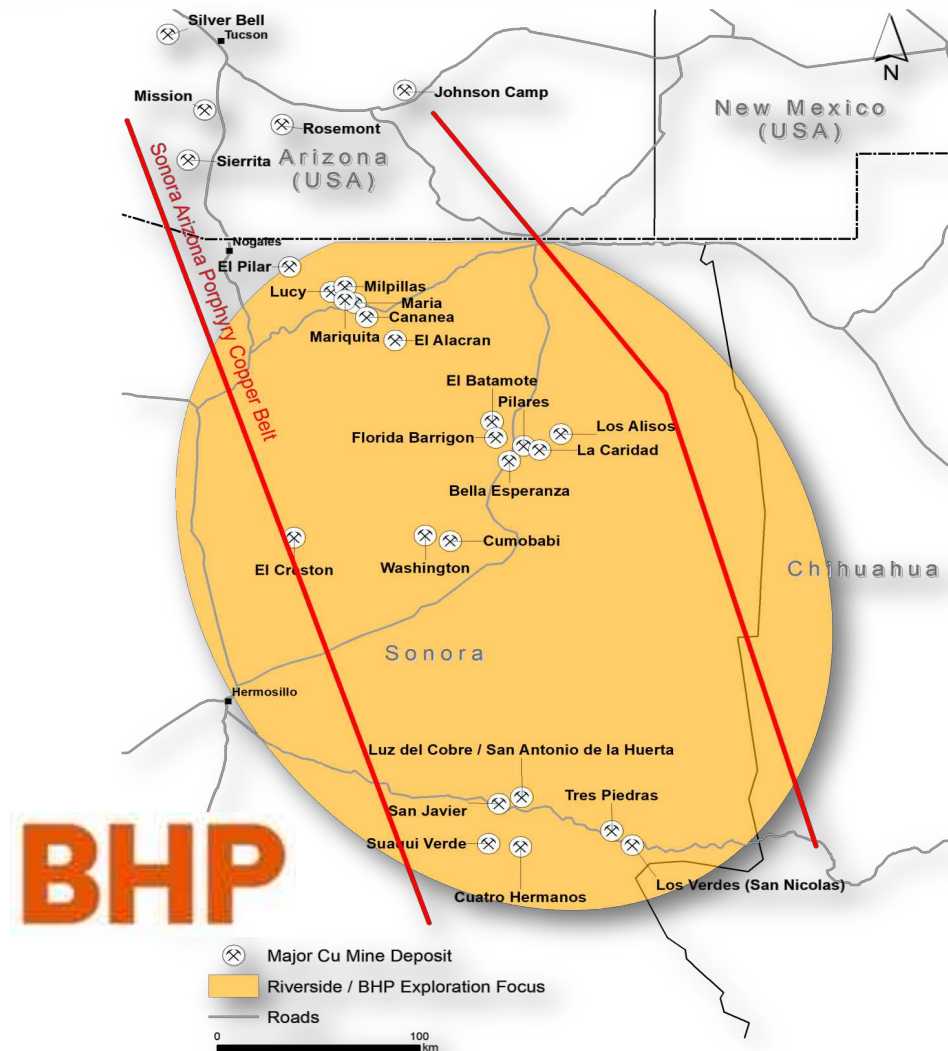


**HOCHSCHILD**

**KINROSS**

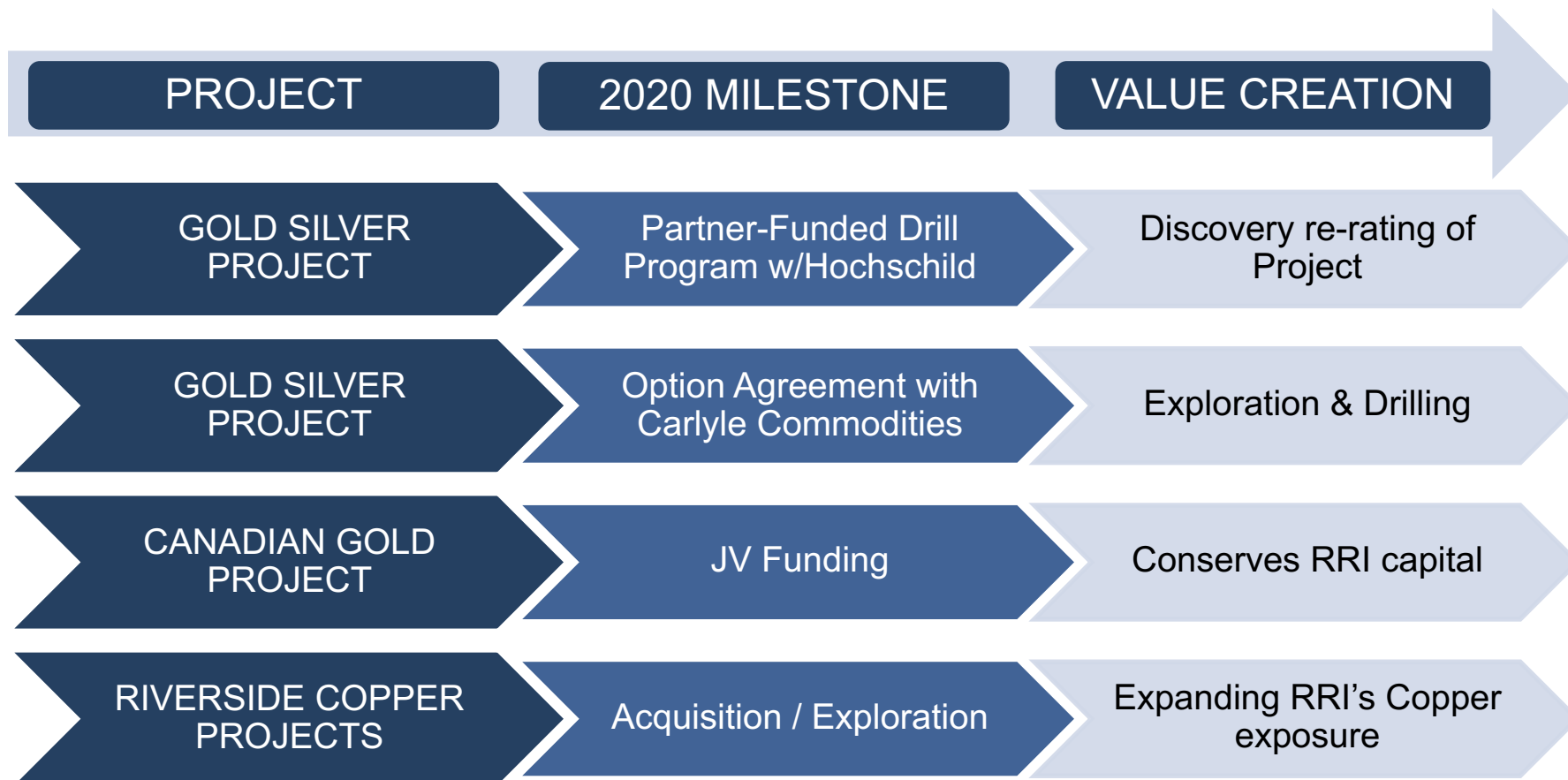
# Exploration Funding Agreement with BHP

- BHP to fund **US\$1M/year** for a minimum of **two-years** for copper generative work
  - Increased funding by BHP for year 2
- Focus on the central portion of the **Laramide Copper Belt** in Sonora, Mexico
- **Monthly management fees** plus 10% for all work
- Built in **success fee payments** to Riverside at each stage of development
- Three Stages
  1. Project Generation Phase (I)
  2. Project Operation Phase (II)
  3. Joint Venture Stage (III)

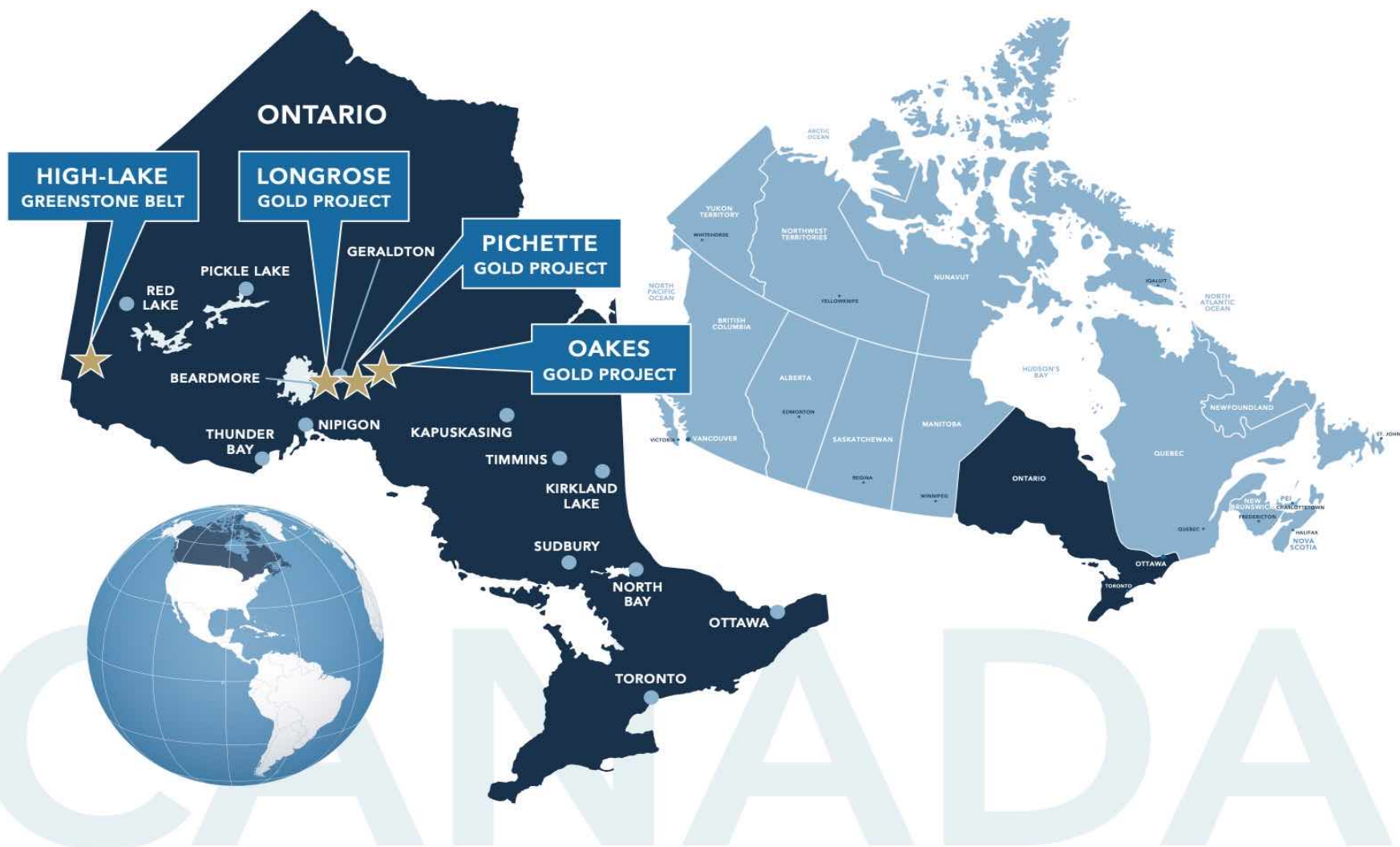


Region of Copper Belt of Mexico and Riverside-BHP Generative program

# Progressing the Portfolio



# Expanding into Canada





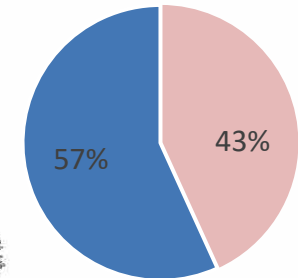
# Why Canada? Why Ontario?

Ontario is the **leading mining jurisdiction in Canada**

Ontario's mining belts are within mining friendly jurisdictions and host excellent infrastructure and **numerous producing mines**

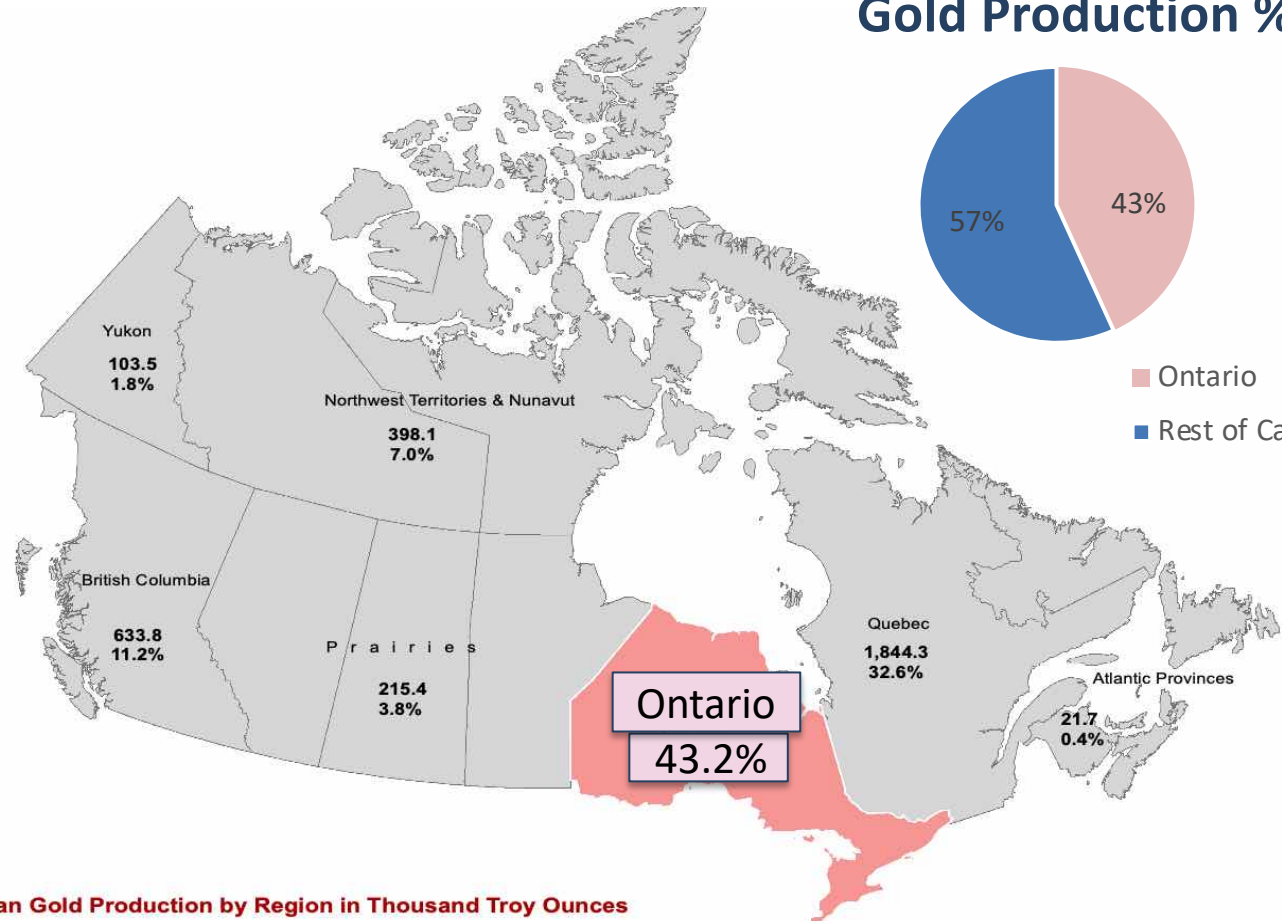
**Riverside's projects** are located Northeast of Thunder bay Ontario **within the Beardmore-Geraldton Greenstone Belt (BGGB)**

## Gold Production %



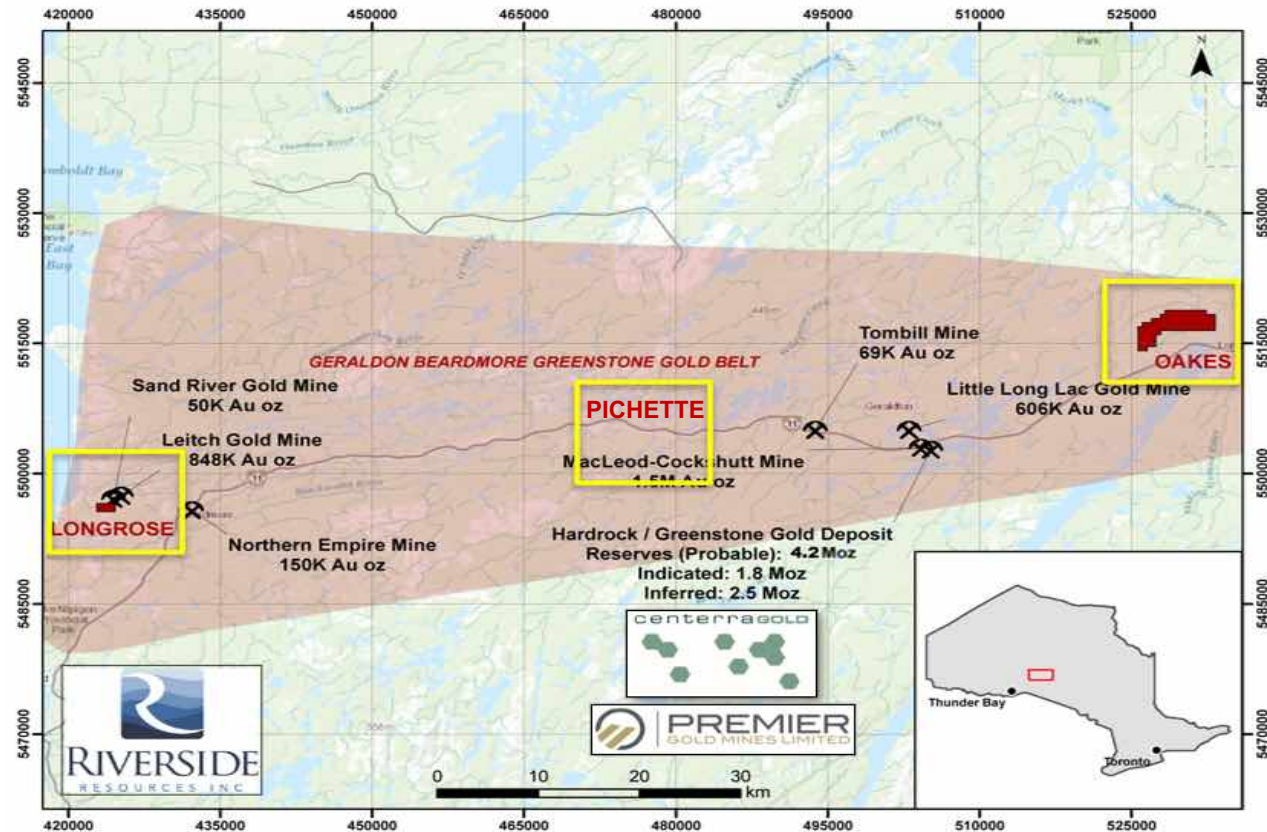
■ Ontario

■ Rest of Canada



# Canadian Project Portfolio

- Located in **Ontario, Canada**
- Good access and close to necessary infrastructure
- Historical **high-grade gold** intercepts
- Riverside's 1st phase exploration program at Oakes found \*high-grade gold samples of **19.7 g/t Au** and **31.9 g/t Au**  
*\*(see press release July 29, 2019)*
- 2<sup>nd</sup> phase exploration at Oakes program found high-grade gold of up to **7 g/t Au**  
*\*(see press release Dec 11, 2019)*
- High-grade gold discovery potential
- Identifying and sampling targets for a proposed **drill program** at these Projects
- Available for option



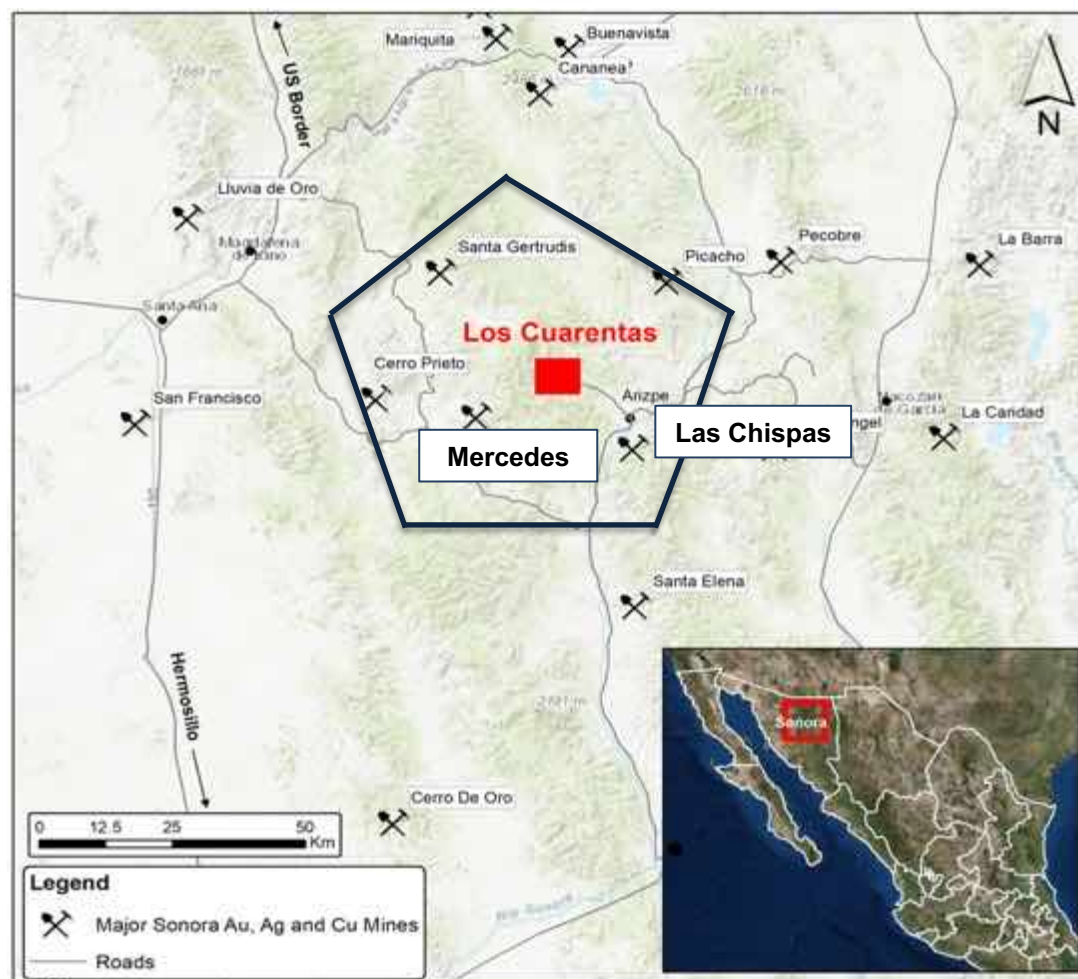
# Diverse High-Quality Mexico Portfolio





# Los Cuarentas Gold-Silver Project

- **Optioned to Hochschild Mining**
- **Partner-funded 2,000 m Drill Program underway**
- **5 yr | US\$8M** partner-funded exploration program
- Located in NE Sonora, Mexico & **17 km NW of SilverCrest Metals' Las Chispas mine**
- **High-grade**, low-sulphidation epithermal gold quartz vein system
- 3<sup>rd</sup> Sampling Program found **high-grade Au** (32.9 g/t & 21.7 g/t Au)  
*\*(see press release October 8, 2020)*
- Near necessary infrastructure
- Identifying and sampling targets





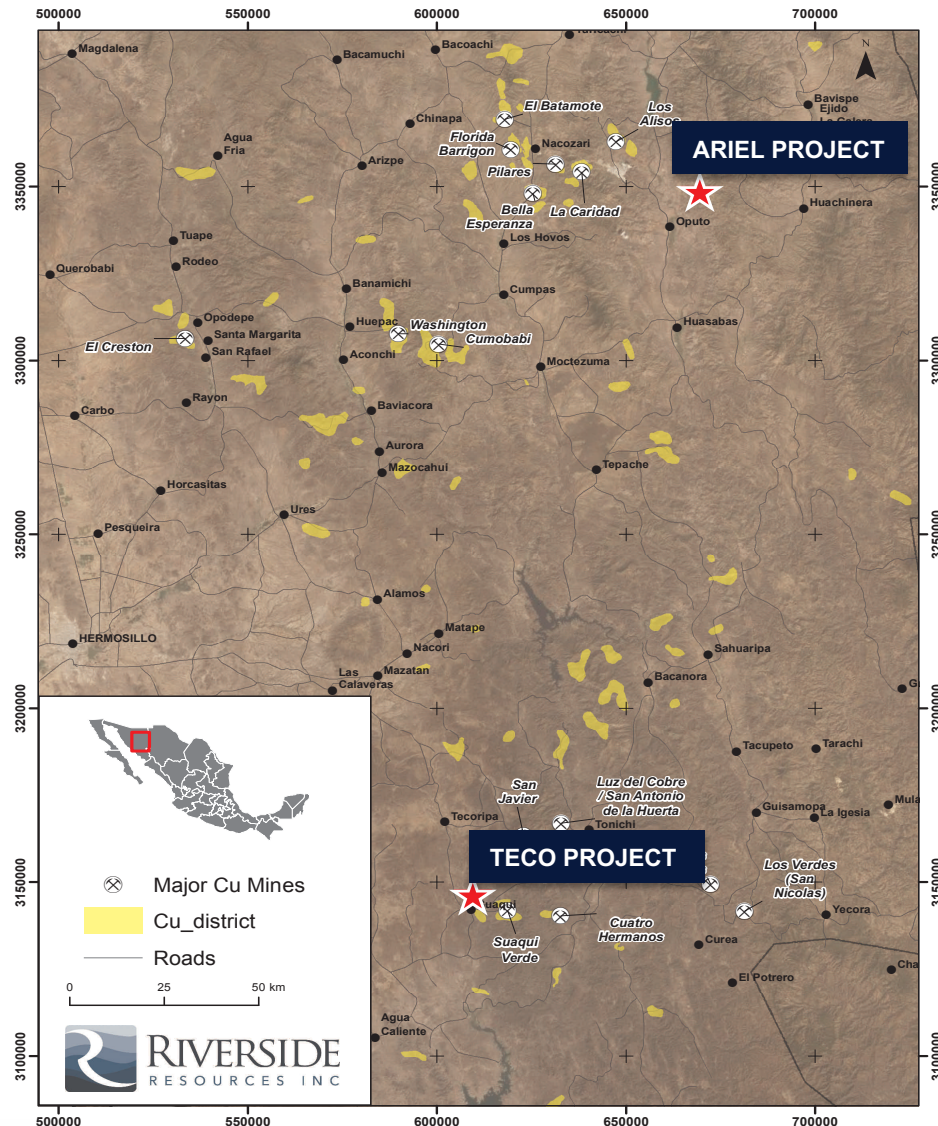
# Cecilia Gold-Silver Project

- **Optioned** to Carlyle Commodities Corp. 3 yrs | \$2.5M partner-funded exploration
- Located in NE Sonora, Mexico, 40 km east of Cananea (Mexico's largest copper city)
- **Good access** and close to necessary infrastructure
- **Near-surface gold mineralization**
- Riverside's 1st phase exploration found \*high-grade gold and silver assays up to **113 g/t Au & 288 g/t Ag**
- **Drill permit approved** with drill targets identified
- Preparing for a fall/winter **drill program**

\*(see press release June 6, 2017)



# RRI Copper Portfolio – Available for Partnership



Riverside has two  
Copper Assets

ARIEL

TECO



Major Mexico Copper Mines

# Asset Value Drivers

**Peñoles Project Spin Out  
Capitan Mining**



**100% Owned Projects**



**CANADA**

Oakes Gold Project

Longrose Gold  
Project

Pichette Gold  
Project

High Lake  
Greenstone Belt



**MEXICO**

La Silla Gold-Silver  
Project

Tajitos Gold Project

Ariel Copper Project

## Riverside's Portfolio & Partnerships

**Funded Exploration  
Program**



Los Cuarentas Gold-Silver  
Project with  
Hochschild Mining PLC

BHP Exploration  
Partnership Program  
for copper discovery in  
Sonora, Mexico

Cecilia Gold-Silver  
Project



- Riverside commences Exploration Funding Agreement with BHP (Year 2)
  - Lead generation → Copper Discovery
- Partner-funded drilling underway at Los Cuarentas
- Cecilia Project: Partner-funded exploration program underway
- Continued exploration at Riverside owned projects:
  - Progressing targets at Ontario Gold Projects & new acquisitions
- New strategic partnerships to advance existing 100%-owned Riverside projects
- New project acquisitions and portfolio growth:
  - Mexico Expansion - Advancing the Los Cuarentas Project w/Hochschild Mining
  - High Lake Greenstone Belt (230 km<sup>2</sup>) acquisition in western, Ontario

## Upcoming 2020/21 Catalysts & Value Drivers



RIVERSIDE  
RESOURCES INC.



- Riverside has more than \$3M in the treasury, no debt & a strong shareholder base with less than 69M shares outstanding
- The Company has a strong portfolio of gold-silver and copper assets in stable jurisdictions and is actively adding new quality projects to the portfolio
- Partners consistently de-risking the portfolio and advancing projects towards discovery and resource development with valuation catalysts of new deals, exploration results and upcoming drill programs

## Summary & Key Takeaways



RIVERSIDE  
RESOURCES INC.



RIVERSIDE  
RESOURCES INC

KNOWLEDGE IS GOLDEN

Riverside Resources Inc.

Suite 550 – 800 West Pender Street  
Vancouver, BC, Canada V6C 2V6

+1 778.327.6671 x 312

[info@rivres.com](mailto:info@rivres.com)